

MR. T.B. BLUES

JIMMY BLANTON FROM DUKE ELLINGTON SOLOS, DUETS & TRIOS

TRANSCRIBED BY MARTIN HESS

SWING ♩ = 150

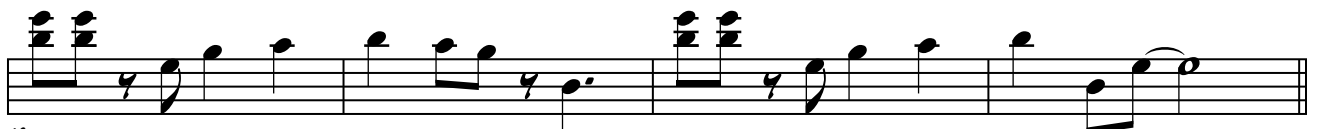
A



5



9



13

B G

C

G



C7

G



21

A-7

D7

G



25

C



73

77

(H) ARCO G BLUES

85

89

(I)

97

101

(J)

109

4 / 4

MR. J.B. BLUES

Musical notation for Mr. J.B. Blues in 4/4 time. The piece is written in bass clef. The first measure contains a half note G2, a quarter note A2, a quarter note B2, and a quarter note C3. The second measure contains a quarter note D3, a quarter note E3, a quarter note F3, and a quarter note G3. The third measure contains a quarter note A3, a quarter note B3, a quarter note C4, and a quarter note D4. The fourth measure contains a quarter note E4, a quarter note F4, a quarter note G4, and a quarter note A4. The fifth measure contains a quarter note B4, a quarter note C5, a quarter note D5, and a quarter note E5. The sixth measure contains a quarter note F5, a quarter note G5, a quarter note A5, and a quarter note B5. The seventh measure contains a quarter note C6, a quarter note B5, a quarter note A5, and a quarter note G5. The eighth measure contains a quarter note F5, a quarter note E5, a quarter note D5, and a quarter note C5. The ninth measure contains a quarter note B4, a quarter note A4, a quarter note G4, and a quarter note F4. The tenth measure contains a quarter note E4, a quarter note D4, a quarter note C4, and a quarter note B3. The eleventh measure contains a quarter note A3, a quarter note G3, a quarter note F3, and a quarter note E3. The twelfth measure contains a quarter note D3, a quarter note C3, a quarter note B2, and a quarter note A2. The piece ends with a double bar line.

113