

# C JAM BLUES

BASS SLAM STEWART FROM "SLAM BAM"

TRANSCRIBED BY MARTIN HESS

♩ = 200



5  
**(A)** C



F

C



13

Dm7

G7

C

G7



17

**(B)** C



F

C



25

Dm7

G7

C

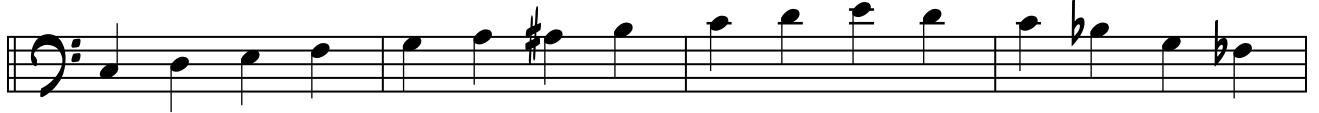
G7



29

**C** C

C7



F

C



37

DM7

G7

C

G7



41

**D** C



F

C



49

DM7

G7+

C

G7



53

**E** C



F

C



61

DM7

G7

CMA7

G7



65

**F** C





4 / 5

C JAM BLUES

DM7

G7

C



113

(J) C

P122



F

DM7

G7



121

C

G7

(K) C



127

F

C



133

DM7

(L) C



137

F



143

DM7

G7

C

G7



149

(M) C

F

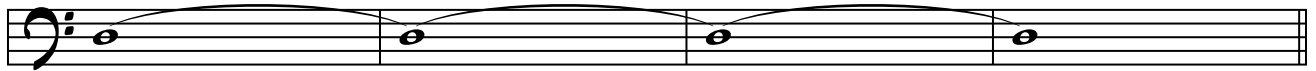


C



158

DM7



161

**N** C



169

DM7

G7

C



173

**O** C



181

DM7

G7

C

G7



185

ARCO



189